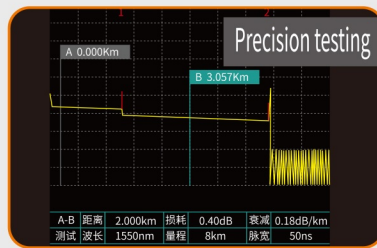


Mini-Pro optical time-domain reflectometer



NK3200S1/NK3200S2/NK3200D



Fiber & RJ45
Photoelectric Integration
Multi-Functions

3.5 inch
3.5 inch Color LCD

8
8 Functional Modules

RJ45
Sequence&Length&Tracker

24dB
24dB Dynamic Range

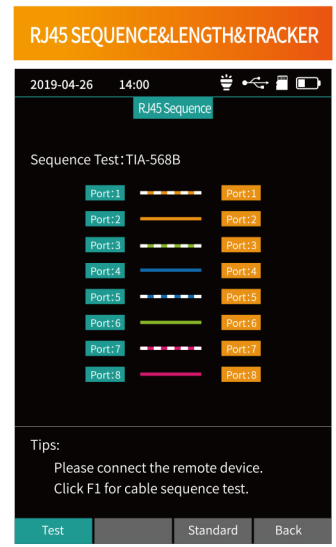
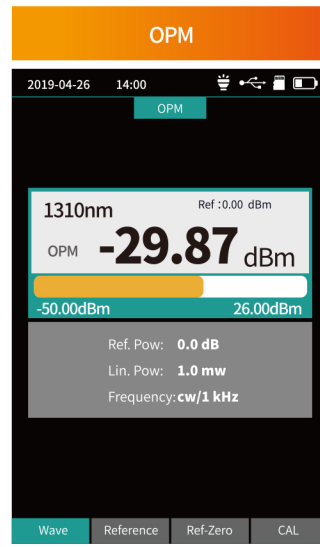
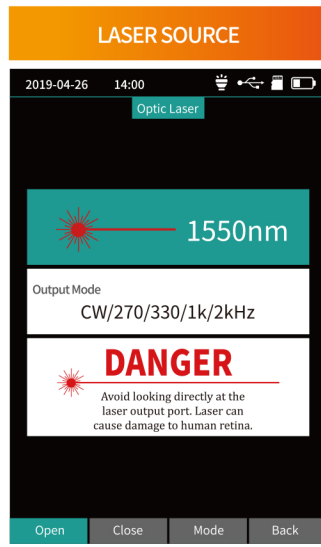
iLOM-EVENT MAP

3m Event Dead Zone
60km Precision testing

8 Functional Modules meet all you need |
 iLOM-Event Map Intelligent link analysis |
 Online detection APD effective protect |
 Remote Upgrade Latest Technical Support |
 RJ45 RJ45 Test Broadband install and maintain

NovKer | Mini-Pro OTDR series

NovKer--- Quality assurance promises, technology to create future



24dB Dynamic Range
60km Precision Test
Online Detection -APD Effective Protection
3m Event Blind Zone



OTDR Optical Time Domain Reflectometer
OPM -50~+26dBm Optical Power Meter
VFL Visual Fault Locator
LS Stabilized Light Source
RJ45 Ethernet Cable Sequence Measurement
Flashlight



Dual-wavelength OTDR
iLOM-Event Map
RJ45 Cable Length Measurement
RJ45 Line-Tracker Function



One-click Automatic Test
File Auto-saving
Test Results Automatic Analysis



SOR File Batch Processing
Remote Upgrade
Batch Export of USB Data Files



12h Continuous measurement time
20h Super-long Standby
Working Temperature: -10°C ~ +50°C

Technical Specifications

Mini-Pro OTDR			
Model	NK3200S1	NK3200S2	NK3200D
Wavelength	1310nm±20nm	1550nm±20nm	1310nm/1550nm±20nm
Fiber Type	G.652		
Dynamic Range	24dB	22dB	24dB/22dB
Event Blind Zone	3m		
ATT Blind Zone	8m		
Test Range	500m~60km		
Pulse Width	3ns~10us		
Ranging accuracy	± (1m+ Sampling interval +0.005%× Test distance)		
Loss accuracy	±0.2dB/dB		
Sampling Points	16k~128k		
Sampling resolution	0.05m~8m		
Reflection accuracy	±3dB		
Data Storage	Internal: ≥600; External: TF Card		
Laser Safety Level	Class II		
File format	SOR Standard file format		
Connector	FC/UPC (Interchangeable SC、ST)		
OPM			
Wave Range	800nm~1700nm		
Interface Type	Universal Joint FC/SC/ST		
Test Range	-50dBm~+26dBm		
Uncertainty	±5%		
Frequency Identification	CW/270/330/1k/2kHz		
Calibration wavelength	850/980/1300/1310/1490/1550/1625/1650nm		
LS			
LD Type	FP-LD		
Wavelength	1310nm±20nm	1550nm±20nm	1310nm/1550nm±20nm
Output Power	≥-5dBm		
Modulation Frequency	270/330/1k/2kHz		
Stability	CW, ±0.5dB/15min (Test after 15 minutes of preheating)		
Connector	FC/UPC (Interchangeable SC、ST)		

VFL	
Wavelength	650nm ±20nm
Output Power	≥10mW
Mode	CW/1Hz/2Hz
Connector	FC/SC/ST
RJ45 Cable Length Measurement	
Test Range	300m
Other Parameters	
Display	3.5 inch Color LCD
Data Interface	Micro USB
External storage	TF Card
Power Supply	Polymer Li-Battery: 3.7V, 4000mAh, Adapter: 5VDC, 2A
Battery Life	Standby>20h; Measuring time>12h
Operating Temperature	-10°C~+50°C
Storage Temperature	-40°C~+70°C
Relative Humidity	0~95%Non Condensing
Size	173mm×82mm×37mm
Weight	≤350g
Functions: OTDR/EVENT MAP/OPM/LS/VFL/RJ45 Sequence/RJ45 Cable Tracker(Additional purchase detector)/RJ45 Line length/Flashlight	

Note:

- ①Test temperature is 25°C+2°C, maximum pulse width, the average time is more than 3 minutes.
- ②Test conditions of Event Blind Zone are minimum range, minimum pulse width, reflection loss of optical fiber end (> 45dB), typical value.

Configuration List

NO.	NAME	QUANTITY	Remarks
1	Host	1	Battery included
2	Adapter	1	
3	Data Line	1	
4	CD-ROM(Analysis software/User's Manual)	1	
5	User's Manual	1	
6	SC/UPC	1	
7	Qualification Certificate/ Service Guarantee Card	1	
8	Calibration Certificate	1	
9	Clean Cotton Slices	10	
10	Instrument Backpack	1	